

Force sensor installation



Blip Box installation 'quick guide' – Ducati 899, 959, 1199

**PRECISION
BLIPBOX**

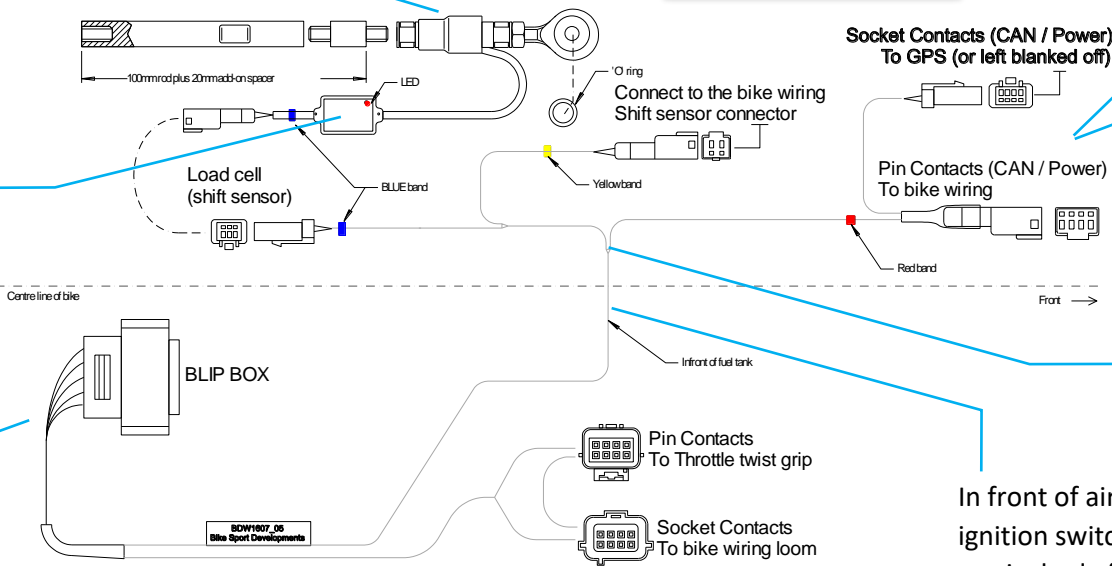
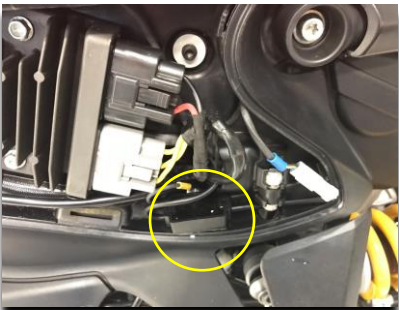


959 (front, where all wires split for lights, dash, turn signals. White 4 way connector)

899 / 1199 (left side)



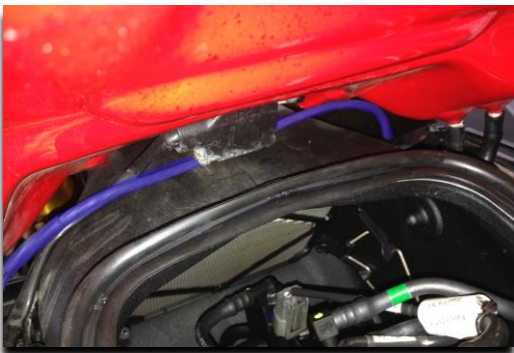
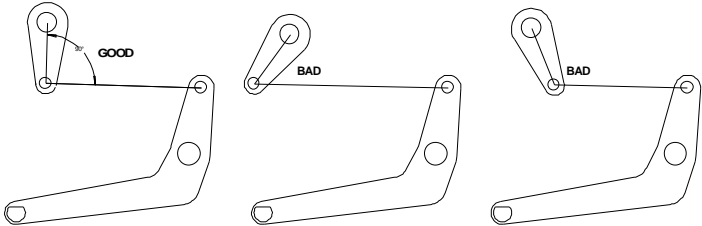
Sensor amplifier



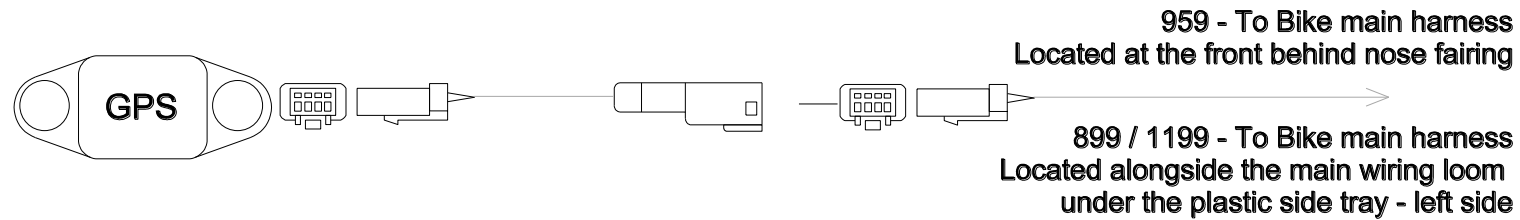
In front of air box cavity but behind the ignition switch, ensure wires are not trapped or pinched after lowering the fuel tank



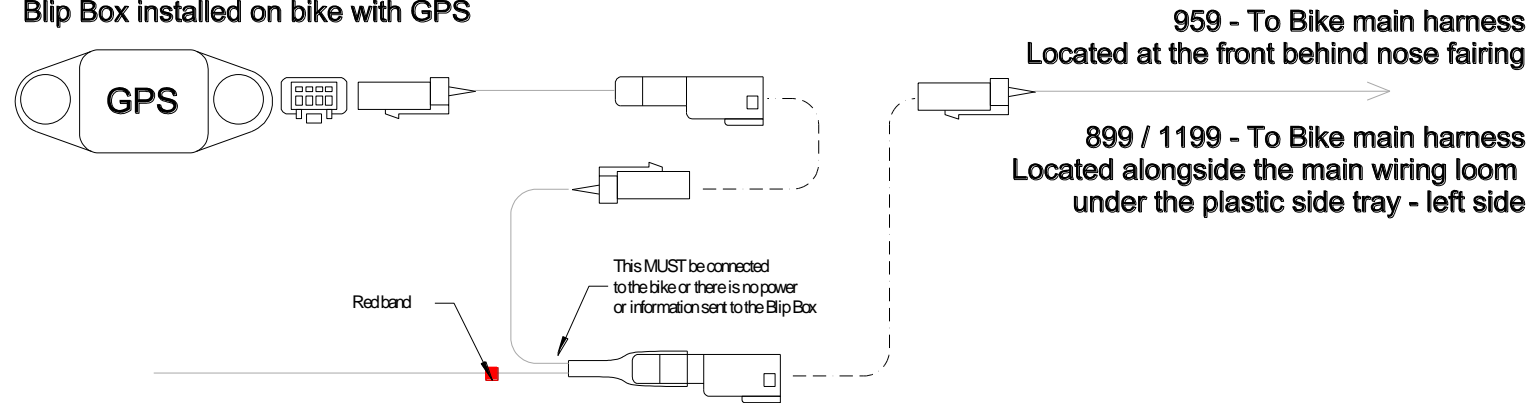
Load cell installation, always try to get the angle close to 90 degrees, this ensures the force measured is even in both directions



Standard bike with GPS module



Blip Box installed on bike with GPS



Blip Box installed on bike without GPS

